



WELLSCREEN, PIPE SIZES
INTAKE AREAS (square inches per linear foot of screen)

Nominal Screen Size (diameter of well casing)	Actual Outside Diameters		Clear Opening Thru Screen		Pipe Thread End Fittings	Approximate Shipping Weight	
	INCHES	MM	INCHES	MM		Lb./Ft.	Kg/M
3	2 3/4	70	2 1/4	57	2" M-F	3 1/2	5
4	3 3/4	95	3 1/4	83	3" M-F	7	10
4 1/2	4 1/4	108	3 3/4	95	3 1/2" M-F	8	12
5	4 3/4	121	4 1/4	108	4" M-F	9	13
5 5/8	5 1/4	133	4 3/4	121	4 1/2" M-F	10	15
6	5 5/8	143	5	127	5" M-F	11	16
8	7 1/2	191	7	178	6" M-F	16	24
10	9 1/2	241	9	229	8" M-F	21	31
12	11 1/4	286	10 1/2	267	10" M-F	26	39
14	12 3/4	324	12	305	Weld-Ring	35	52
16	14	356	13	330	Weld-Ring	42	62
18	16	406	15	381	Weld-Ring	44	65

	10 slot	15 slot	20 slot	40 slot	60 slot	80 slot
1 1/4" DP.	9	12	15	24	30	35
2" DP.	13	18	22	36	45	52
2" PS.	14	20	25	40	50	57
3" PS.	19	26	33	53	66	75
4" PS.	25	35	44	70	88	100
5" PS.	30	42	53	84	106	120
6" PS.	35	50	62	77	100	117
8" PS.	46	65	81	100	130	153
10" PS.	41	58	73	125	162	190
12" PS.	48	69	87	149	192	226
14" PS.	38	55	70	124	166	200
16" PS.	43	62	80	142	190	230
18" PS.	48	70	90	160	214	258

WELLSCREEN, TELESCOPE SIZES
INTAKE AREAS (square inches per linear foot of screen)

Nominal Screen Size (diameter of well casing)	Actual Outside Diameters		Clear Opening Thru Screen		Pipe Thread End Fittings	Approximate Shipping Weight	
	INCHES	MM	INCHES	MM		Lb./Ft.	Kg/M
3	2 3/4	70	2 1/4	57	2" M-F	3 1/2	5
4	3 3/4	95	3 1/4	83	3" M-F	7	10
4 1/2	4 1/4	108	3 3/4	95	3 1/2" M-F	8	12
5	4 3/4	121	4 1/4	108	4" M-F	9	13
5 5/8	5 1/4	133	4 3/4	121	4 1/2" M-F	10	15
6	5 5/8	143	5	127	5" M-F	11	16
8	7 1/2	191	7	178	6" M-F	16	24
10	9 1/2	241	9	229	8" M-F	21	31
12	11 1/4	286	10 1/2	267	10" M-F	26	39
14	12 3/4	324	12	305	Weld-Ring	35	52
16	14	356	13	330	Weld-Ring	42	62
18	16	406	15	381	Weld-Ring	44	65

	10 slot	15 slot	20 slot	40 slot	60 slot	80 slot
3" tele	14	20	25	40	50	57
4" tele	19	26	33	53	66	75
5" tele	25	35	44	70	88	100
6" tele	30	42	53	84	106	120
8" tele	40	56	70	88	112	132
10" tele	36	51	65	111	143	168
12" tele	41	59	74	127	164	192

Open areas may differ from these figures.
Intake areas quoted are for standard screens.
Concord Screen open area screen will increase intake area, reducing collapse strength.
Concord Screen extra strong screen will reduce open area, increasing collapse strength.

Maximum flow transmitting capacity of our screen can be obtained from these figures.
To determine GPM per foot of screen length, multiply the intake area by 0.31, this is the maximum flow capacity of the screen under ideal conditions with an entrance velocity of 0.1 ft/sec.

PRICE LIST- PIPE SIZE

Screen Size (in)	O.D.	I.D.	Screen Price Per Foot	Screen Price Per Foot (Extra Open Area)	Welding Rings	Male Pipe Thread	Female Pipe Thread	Stainless Steel Bottom	
2	2 5/8"	2"	40.50	51.00	35.00	41.00	41.00	57.00	
3	3 5/8"	3"	42.75	53.00	39.00	43.00	43.00	68.00	
4	4 5/8"	4"	56.40	71.00	48.00	57.00	57.00	78.00	
5	5 5/8"	5"	64.25	75.00	52.00	65.00	65.00	89.00	
6	6 5/8"	6"	73.40	83.00	55.00	89.00	89.00	100.00	
8	8 5/8"	8"	127.00		73.00	112.00	112.00	120.00	
10	10 3/4"	10"	151.00		89.00	167.00	167.00	158.00	
12	12 3/4"	12"	190.00		135.00	235.00	235.00	244.00	
14	14"	13 1/8"	220.00		164.00			286.00	
16	16"	15"	PRICE ON REQUEST FOR 15" & 16"						
18	18"	16"	PRICE ON REQUEST FOR 15" & 16"						

PRICE LIST -TELESCOPE SIZE

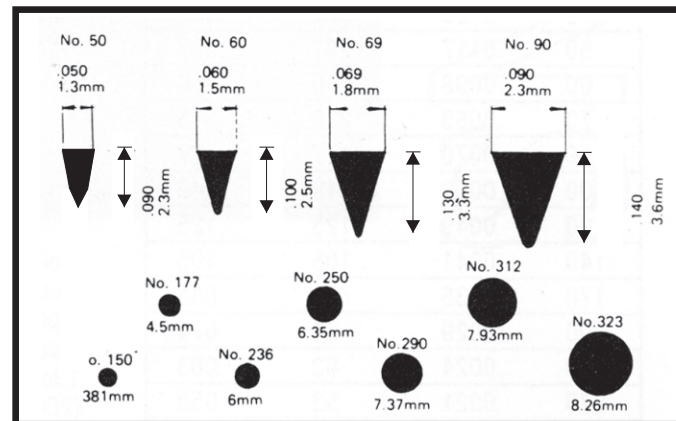
Screen Size (in)	O.D.	I.D.	Screen Price Per Foot	Screen Price Per Foot (Extra Open Area)	Welding Rings	Male Thread	Female Thread	K Packer	Stainless Steel Bottom	
3	2 5/8"	2"	40.50	51.00	39.00	41.00	41.00	41.00	55.00	
4	3 5/8"	3"	42.50	53.00	40.00	43.00	43.00	59.00	66.00	
5	4 5/8"	4"	56.10	71.00	49.00	57.00	57.00	64.00	78.00	
6	5 5/8"	4 7/8"	64.15	75.00	54.00	65.00	65.00	101.00	89.00	
8	7 1/2"	6 5/8"	73.50	83.00	71.00	122.00	122.00	210.00	114.00	
10	9 1/2"	8 5/8"	131.50	PRICE ON REQUEST FOR 15" & 16"						
12	11 1/4"	10 3/8"	153.75	PRICE ON REQUEST FOR 15" & 16"						

GENERAL INFORMATION

PARTICLE SIZE CONVERSION TABLE

U.S. Mesh	INCHES	MICRONS	MILLIMETRES
3	.265	6730	6.73
3	.223	5660	5.66
4	.187	4760	4.76
5	.157	4000	4.00
6	.132	3360	3.36
7	.111	2830	2.83
8	.0937	2380	2.38
10	.0787	2000	2.00
12	.0661	1680	1.68
14	.0555	1410	1.41
16	.0469	1190	1.19
18	.0394	1000	1.00
20	.0331	841	.84
25	.0280	707	.71
30	.0232	595	.59
35	.0197	500	.50
40	.0165	420	.42
45	.0138	354	.35
50	.0117	297	.297
60	.0098	250	.250
70	.0083	210	.210
80	.0070	177	.177
100	.0059	149	.149
120	.0049	125	.125
140	.0041	105	.105
170	.0035	88	.088
200	.0029	74	.074
230	.0024	63	.063
270	.0021	53	.053
325	.0017	44	.044
400	.0015	37	.037

TYPICAL WIRE SIZES



METRIC CONVERSIONS

DISTANCE

IMPERIAL	to	METRIC
1 INCH	=	2.540 CENTIMETRES
1 FOOT	=	0.3048 METRE
1 YARD	=	0.9144 METRE
1 ROD	=	5.029 METRES
1 MILE	=	1.609 KILOMETRES

METRIC	to	IMPERIAL
1 CENTIMETRE	=	0.3937 INCH
1 METRE	=	3.281 FEET
1 METRE	=	1.094 YARDS
1 METRE	=	0.20 RODS
1 KILOMETRE	=	0.62 14 MILE

WEIGHT

1 OUNCE (TROY)	=	31.103 GRAMS
1 OUNCE (AVOIR)	=	28.350 GRAMS
1 POUND (TROY)	=	373.242 GRAMS
1 POUND (AVOIR)	=	453.592 GRAMS
1 TON (SHORT)	=	0.907 TONNE*
(2000 LB.)		

1 GRAM	=	0.032 OUNCE(TROY)
1 GRAM	=	0.035 OUNCE (AVOIR)
1 KILOGRAM	=	2.679 POUNDS (TROY)
1 KILOGRAM	=	2.205 POUNDS (AVOIR)
1 TONNE	=	1.102 TON (SHORT)

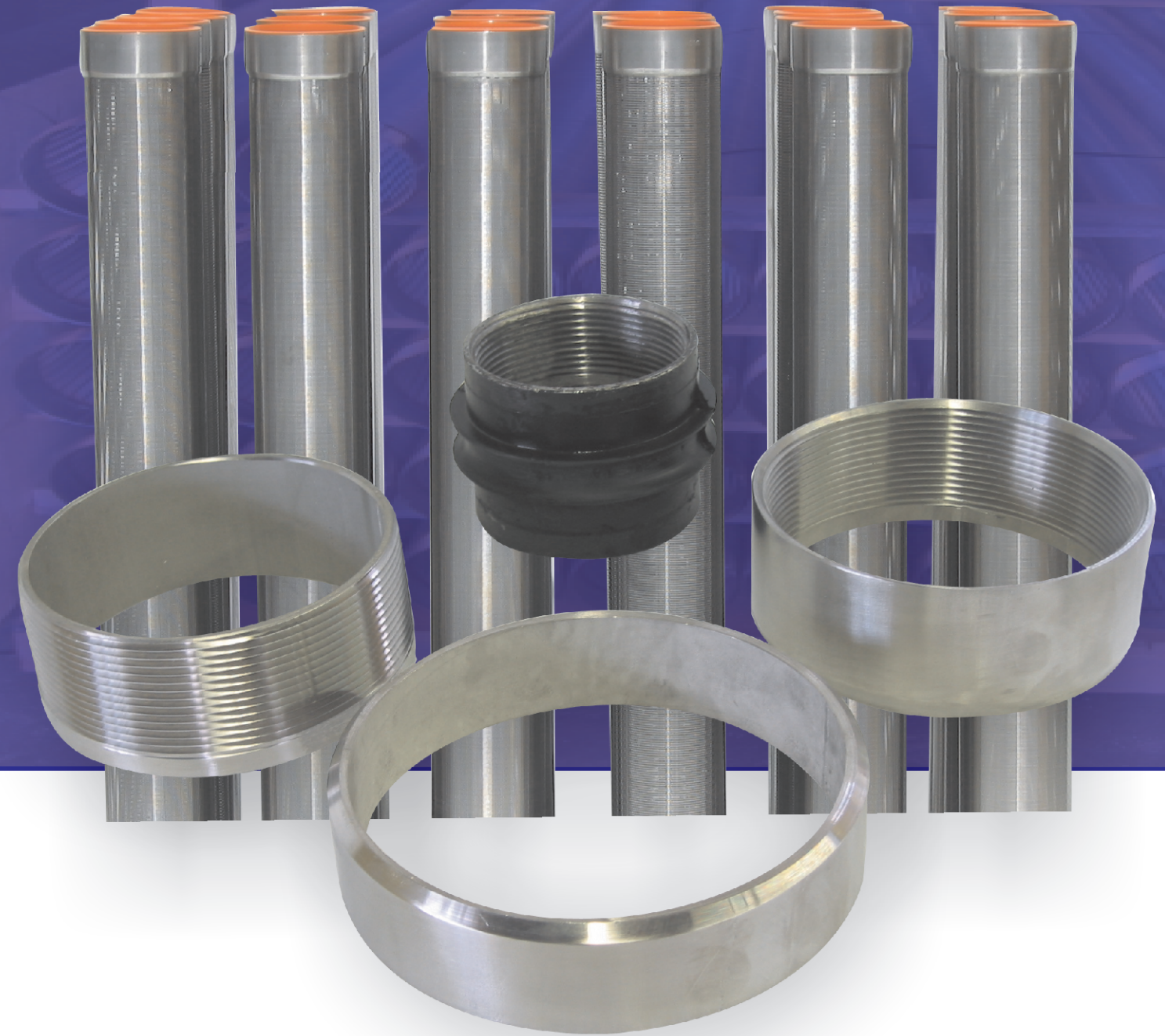
1 TONNE= 1000 KILOGRAMS

U.S.	=	LITRE
1 PINT(U.S.)	=	0.473 LITRE
1 QUART (U.S.)	=	0.946 LITRE
1 GALLON (U.S.)	=	3.785 LITRES
1 BARREL OIL	=	158.99 LITRES
1 CUP 8FL. OUNCES	=	227 ML
1 TABLESPOON	=	14.21 ML
1 TEASPOON	=	4.74 ML

CAPACITY

IMPERIAL	=	LITRE
1 PINT	=	0.568 LITRE
1 GALLON	=	4.546 LITRES
1 BUSHEL	=	36.369 LITRES
1 FLUID OZ.	=	28.41 ML
1 QUART	=	1.137 LITRES
1 LITRE	=	1.76 PINTS
1 LITRE	=	0.220 GALLON
1 LITRE	=	.88 QUART

WELL SCREENS



15 Connie Crescent, Concord, Ontario, Canada L4K 1L3
Telephone: (905) 669-5950 Fax: (905) 669-8744

www.concordscreen.com



